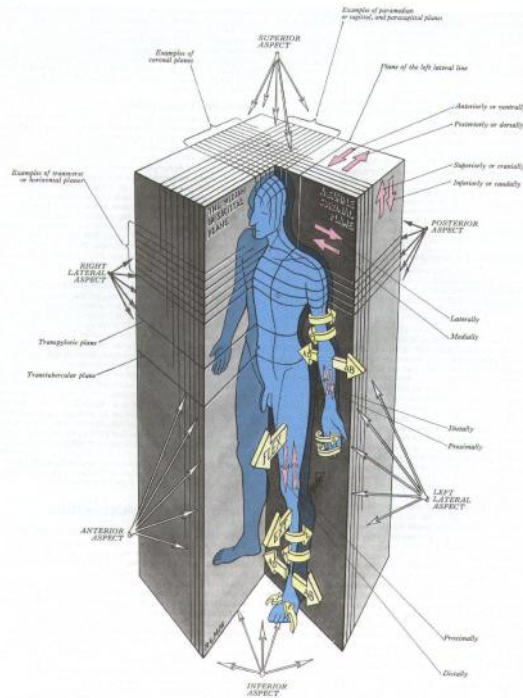


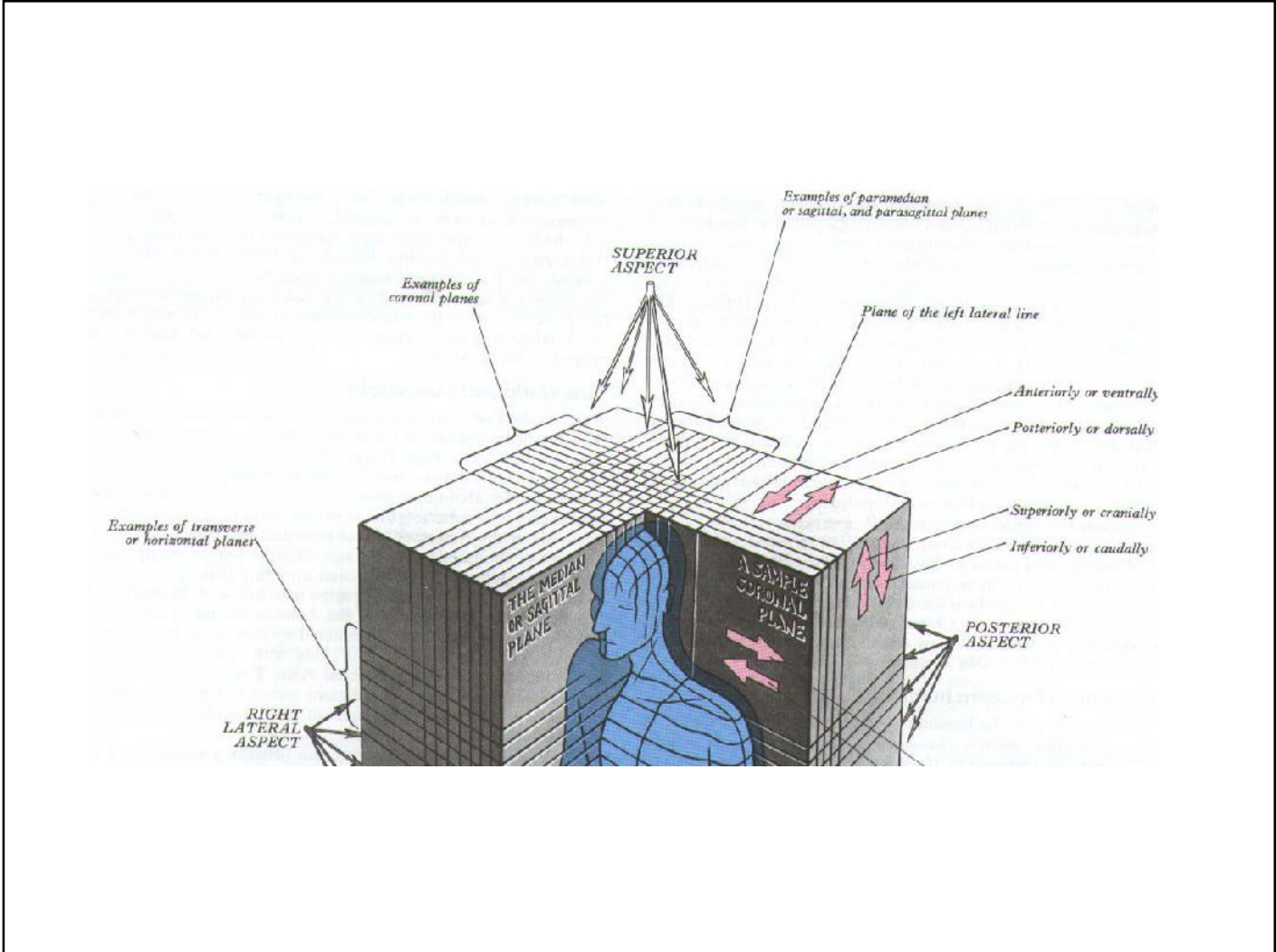
Anatomic Orientation

BMP 218

October 7, 2014



1.5 The terminology widely used in descriptive anatomy. The abbreviations shown on the solid arrows: AD - adduction; AB - abduction; FLEX - flexion (of the thigh at the hip joint); EXT - extension (of the leg at the knee joint); M and L - medial and lateral rotation, P and S - pronation and supination, I and E - inversion and eversion.



Anatomic position (know these terms)

anterior

posterior

ventral

dorsal

left

right

lateral

medial

superior

inferior

cranial

caudal

Planes of section (know these terms)

sagittal

coronal

**axial (also referred to as horizontal, transverse,
transaxial, cross-sectional)**

oblique

Bones to Know

Figure 3.1. Anterior view drawing of the whole skeleton.

